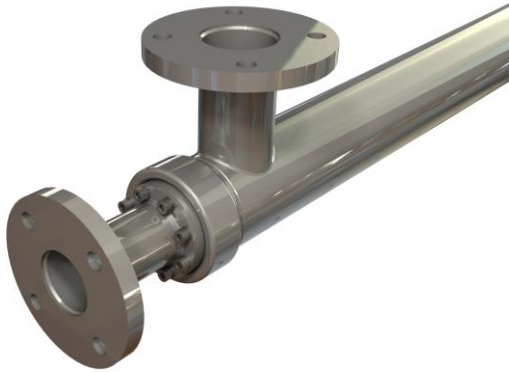


HRS DTR SERIES

INDUSTRIAL DOUBLE TUBE HEAT EXCHANGER

(With Removable Inner Tube)



The HRS DTR Series is a complete stainless steel double tube design ideal for product to product applications. Because of its geometry the DTR Series is a true counter current heat exchanger; the product flows through both the inner tube and the surrounding shell. The removable inner tube allows for effective cleaning of both shell and tube. Using our corrugation technology, heat transfer and efficiency are increased over standard smooth tube heat exchangers. In addition potential fouling is minimised.

APPLICATIONS

Sludge Heating/Cooling & Pasteurisation
 Digester Heating
 Sludge-to-Sludge Heat Recovery

MATERIALS OF CONSTRUCTION

Shell Side: AISI 316L Stainless Steel
 Tube Side: AISI 316L Stainless Steel

STANDARD CONNECTIONS

Shell Side: Flange
 Tube Side: Flange

SURFACE FINISH

External: Matt
 Tube Side: Descaled

STANDARD DESIGN CONDITIONS

Shell Side: 10 barg/185° C
 Tube Side: 10 barg/185° C

FEATURES

Corrugated tubes for increased heat transfer

Multiple units can be interconnected and have the option of frame mounting, insulation and cladding in stainless steel



RANGE

Models:	Lengths (m)	Surface Area (m ²)	Shell Side Connection	Tube Side Connection	Max Flow Shell (m ³ /hr)	Max Flow Tubes (m ³ /hr)	Volume Shell Side (L)	Volume Tube Side (L)
DTR 51/25	3.0 – 6.0	0.4	DN40	DN15	13	4	8.2	2.5
DTR 64/38	3.0 – 6.0	0.6	DN40	DN25	17	10	10.3	5.7
DTR 76/51	3.0 – 6.0	0.9	DN40	DN40	18	18	14.1	11.0
DTR 104/64	3.0 – 6.0	1.1	DN65	DN50	43	29	29.7	16.9
DTR 104/76	3.0 – 6.0	1.3	DN65	DN65	33	41	21.5	24.8
DTR 129/104	3.0 – 6.0	1.8	DN80	DN80	37	77	26.0	46.4
DTR 168/129	3.0 – 6.0	2.4	DN100	DN100	55	120	45.4	73.6

The surface area and volumes shown are for 6.0 meter length models